

WTG *Achievers*

Vol. 1, No.8

March 2001

About WTG

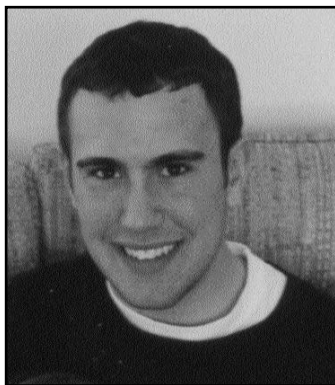
The 21 private, or independent, colleges and universities of Wisconsin operate without taxpayer support, but provide an invaluable public service to Wisconsin, educating over 50,000 students a year. Many of Wisconsin's best and brightest need help to attend the college of their choice.

The State of Wisconsin created the Wisconsin Tuition Grant (WTG) in 1965. Its goal is to help financially needy Wisconsin citizens to succeed. There are only enough funds allocated to WTG to cover about half of the needy students who apply every year. Each month WTG Achievers brings you success stories of two Wisconsinites for whom WTG has made a difference.

*WTG Achievers is published monthly by the Wisconsin Association of Independent Colleges and Universities (WAICU)
16 N. Carroll St., Suite 200
Madison, WI 53703
608-256-7761
Fax 608-256-7065
mail@waicuweb.org*

Dr. Rolf Wegenke
President
Dr. Mari McCarty
VP for Research and
Information, Editor
Mr. David Dies
VP for Public Policy
Ms. Carol Hart
Executive Assistant

Lakeland Accounting Major Counts Blessings



Cory Nickel of Pipe, Wisconsin, a freshman at Lakeland College

The Lakeland College men's basketball team had just won a holiday basketball tournament and the group was ready to

enjoy the rest of the long weekend. Lakeland head coach Paul Combs reminded his players not to get too crazy. Freshman Cory Nickel offered an interesting alternative — a night with Blue's Clues.

Cory, a 19-year-old Lakeland freshman, has a unique appreciation for Blue's Clues, a popular series of television programs geared toward toddlers.

Cory is an accounting major, not an early-childhood education major, but he has his own toddler, Trenton. Being a young father and a college student hasn't been easy, but

given the chance to re-do the past, he wouldn't change a thing.

Cory and Trenton's mother, Mesha, with the unwavering support of their parents, have made the best of what, for many parents their age, would be an impossible situation.

Mesha attends a technical school in Fond du Lac. Trenton spends four mornings a week in Lakeland's Learning Tree Academy, a day-care facility with two on-campus locations.

Cory receives a Wisconsin Tuition Grant, part of a larger

CONTINUED ON PAGE 2

MIAD Student Balances Community Service and Education



Gregory Letts of Waukesha, a senior at the Milwaukee Institute of Art & Design

For most college students, time is a scarce resource divided between classes, term

papers, and projects. Yet Gregory Letts of Waukesha, a senior majoring in communication design, has found time to contribute to the community while maintaining outstanding grades at the Milwaukee Institute of Art & Design (MIAD).

"The more I come to know Greg, the more my admiration for him grows. He is ambitious, bright, intuitive, and extremely personable," said Rebecca Balistreri, dean of design at MIAD. "He is a remarkable young man."

At MIAD, Greg is part of Visual Resources, a design

class providing professional experience and academic credit for upper-level students. Through Visual Resources he has designed an annual fund campaign brochure and a Continuing Education catalog for MIAD as well as an event brochure for Public Allies, and worked with a fellow student on the Web site for Creative SHARP Presentations.

"I think of my classes as not just places to learn, but also as a forum to test ideas and gather insights from other students," said Greg. "At MIAD, I found that forum in the smaller size classes and the attention faculty members

CONTINUED ON PAGE 2

CORY NICKEL CONTINUED FROM PAGE 1

financial aid package from Lakeland that made attending college a reality. "Lakeland is really helping me be what I want to be in life," Cory said.

Cory, a local basketball standout, was attracted to Lakeland for the accounting program and the ability to continue his hoops career, but he knows that without the financial assist, he wouldn't be in college.

This young father is juggling a substantial load. Cory's schedule includes 16 credits, and he was a 4.0 student at the midterm. He's a starting guard with the basketball team, thanks to some solid early-season play. He works a night or two a week at two different jobs, but feels he can carve out plenty of time both for Trenton and to enjoy life as a college student.

"Mesha does a great job," Cory said. "We get a lot of help from our parents. Her parents and my parents are just terrific."

Trenton has become part of the Lakeland family as much as Cory. Not only is he a fixture at Learning Tree; the energetic youngster is usually in the stands cheering on his dad at home basketball games. Cory said Trenton benefits from the stability and pre-school preparation at Learning Tree. "He learns new things every day," Cory said. "He carries it over into the house."

Cory knows the job-placement rate for Lakeland graduates is solid — Lakeland placed 100 percent of its 2000 day-program graduates, according to a recent survey — so he's confident about his career choice, for both him and his son.

"Just because his mom and I work and go to school doesn't mean that we aren't close to him, or don't play a big role in his life," Cory said. "College is making a big difference in my life, and it will make a difference in Trenton's life, too," he concluded.

FACT OF THE MONTH

70 percent of the 50,000 students enrolled at Wisconsin's private colleges and universities are from in-state. And nearly a third of the students from out-of-state elect to remain in Wisconsin after graduation, strengthening the state's workforce.

GREGORY LETTS CONTINUED FROM PAGE 1

provide each student. It's one of the many things I value at the college."

Greg also values the resources MIAD's financial aid department has coordinated, including a \$2,300 Wisconsin Tuition Grant.

Greg is remarkable not just for his academic and community accomplishments, but also for his perseverance in his fight against leukemia, now in remission. This has not stopped Greg from achieving personal goals through his commitment as a Boy Scout. As an Explorer Scout, he served as the vice president of Post 42 in

Waukesha. In 1997, Greg received the Exploring Leadership Award from the Waukesha Area Council Boy Scouts and earned the rank of Eagle Scout. He also developed an educational program about Native Americans for the Cub Scouts and participated in clearing trails for back packers in the mountains of New Mexico.

In addition to Greg's role with the Boy Scouts, he is a member of the Amateur Radio Emergency Service, an organization which helped provide communications for the Red Cross during Milwaukee's Great Circus Parade. Greg has been recognized by his instructors for his creative gifts and enthusiasm for

learning at Waukesha West High School and over the past three years at MIAD. He has also contributed his talents to MIAD's Creative Educators Institute, computer studio courses, and Visual Resources as a computer assistant, helping high school students improve their artistic and technical abilities.

"Beyond my studies, I have always felt that community involvement is important," said Greg. "I enjoy these activities, and plan to continue with them as long as I can make a difference." With the help of a Wisconsin Tuition Grant, Greg is able to reach his goals as a designer and community volunteer.

Wisconsin's Private Colleges and Universities

Alverno College *Milwaukee*
 Beloit College *Beloit*
 Cardinal Stritch University *Milwaukee*
 Carroll College *Waukesha*
 Carthage College *Kenosha*
 Concordia University *Mequon*
 Edgewood College *Madison*

Lakeland College *Sheboygan*
 Lawrence University *Appleton*
 Marian College *Fond du Lac*
 Marquette University *Milwaukee*
 Milwaukee Institute of Art & Design *Milwaukee*
 Milwaukee School of Engineering *Milwaukee*
 Mount Mary College *Milwaukee*

Mount Senario College *Ladysmith*
 Northland College *Ashland*
 Ripon College *Ripon*
 St. Norbert College *De Pere*
 Silver Lake College *Manitowoc*
 Viterbo University *La Crosse*
 Wisconsin Lutheran College *Milwaukee*

**WISCONSIN'S
 PRIVATE COLLEGES**

From here, you can go anywhere.