

WTG *Achievers*

Vol. 5, No. 5

December 2004

About the WTG

The twenty private, or independent, colleges and universities of Wisconsin operate without taxpayer support, but provide an invaluable public service to the state, educating more than 55,000 students a year. Many of Wisconsin's best and brightest need help to attend the college of their choice.

The State of Wisconsin created the Wisconsin Tuition Grant (WTG) in 1965 to help financially needy Wisconsin citizens to succeed. Fully one-third of the needy students who apply for the WTG are turned away every year for lack of funds. Each month WTG Achievers brings you success stories of Wisconsinites for whom the WTG has made a difference.

WTG Achievers is published monthly by the Wisconsin Association of Independent Colleges and Universities (WAICU), 122 W. Washington Avenue, Madison, WI 53703-2718; 608-256-7761; mail@waicuweb.org. For more information, or for back issues of *WTG Achievers*, visit our website: www.waicuweb.org

Rolf Wegenke, Ph.D.

President

Mari McCarty, Ph.D.

Senior Vice President

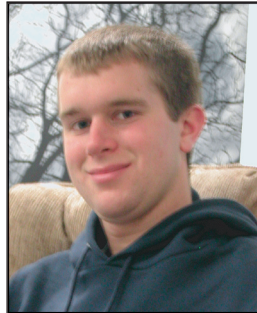
Paul Nelson

VP for Public Policy

Deborah Holbrook

VP for Communications

Northland, WTG give recipient tools for living



Jason Ihlenfeldt of Green Bay, a junior at Northland College

If he happens to have an entire morning or afternoon free, you will probably find Jason Ihlenfeldt, a junior at Northland College, out fishing on one of the many nearby lakes. The college's proximity

to national forests and Lake Superior is one of the reasons that Jason chose to come to Northland.

"Northland stood out to me because of its environmental focus, as well as its unique location in Northern Wisconsin," says Jason. Because he's from Green Bay, he also feels that he's "close, but not too close" to home.

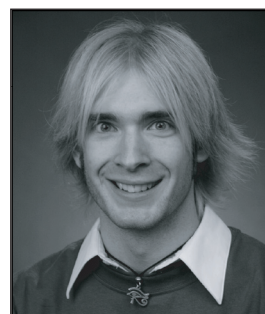
With a double major in broadfield natural sciences secondary education and religion and a minor in biology teaching, Jason keeps himself busy. This curriculum involves

many science courses, and he often has a lot of lab work and test preparation to do on any given day. This doesn't bother Jason, whose love of science is something he wants to pass on.

"I plan to become a high school science teacher in either physics or biology in Wisconsin," says Jason. He is also interested in pursuing ministry, but feels that will be in the more distant future. "Right now, I would like to travel or volunteer internationally after graduation," he explains, "I simply want to leave

CONTINUED ON PAGE 2

First-generation, small-town student learns WTG grant, Milwaukee make MSOE special



Joshua Boone Sesvold of Osseo, a senior at Milwaukee School of Engineering

Joshua Boone Sesvold, who goes by the name "Boone," was faced with a variety of challenges when he set foot

on the Milwaukee School of Engineering (MSOE) campus four years ago. Boone grew up in Osseo, Wisconsin, and attended Whitehall Memorial High School. He is an only child and a first-generation student, who says that life back home is very different than life here in the city.

He came to MSOE to pursue a degree in electrical engineering. "I was looking for a good school with a good reputation," says Boone. He was attracted to MSOE because it was smaller and felt more personal than other

schools. "I feel like people here care about me, and they honestly want to help me. If I'm late or missing from a class, the professors notice and actually ask, 'Where's Boone today?'" That means a lot to me, coming from a small town."

As his college career progressed, he began to realize that a career in electrical engineering was not the path he wanted to follow. He had always had a high technical aptitude but enjoyed his communication courses as

CONTINUED ON PAGE 2

JASON IHLENFELDT *CONTINUED FROM PAGE 1*

Northland with the ability to make a difference, and I expect to do so.”

Jason believes that “the greatest asset of Northland is its close-knit community,” and it shows in his active involvement on campus. He is the vice-president of the Alpha Chi Honor Society, a Resident Advisor, and an Admissions Tour Guide.

Through the student government, he is currently serving a two-year term as student representative to Academic Council, which makes decisions about new courses, majors, minors, and programs at Northland.

“My efforts in developing, planning, and implementing my own academic program at Northland allow me to bring to the council the perspective of a student who has personally experienced those moments of success and frustration that any student encounters,” Jason

explains, “In this way, I attempt to represent the student voice on the council.”

With such a full schedule, Jason still tries to find time each day for some type of exercise, which he sees as the best stress reliever. “I am usually successful in making time for exercise, which usually turns out to be an afternoon jog or sometimes a bike ride or swim,” he says.

Jason wanted to stay in Wisconsin for college and feels that a liberal arts curriculum is most important for a well-rounded education, but he worried that attending a small, private college like Northland would be difficult to afford.

“The Wisconsin Tuition Grant in combination with other sources of financial aid have made my education at Northland very affordable,” says Jason, “I am very happy with where I am and am grateful for the support that allows me to be here.”

FACT OF THE MONTH

Had states coordinated increases in need-based grants on a level equal (on a per-FTE basis) to one-quarter of the public sector increases in tuition, an estimated 1.21 million additional students would have enrolled in college in the 1990s across the United States.

*“Expanding College Access: The Impact of State Finance Strategies”
Lumina Foundation for Education, Research Report
Page 2*

JOSHUA BOONE SESVOLD *CONTINUED FROM PAGE 1*

well. Boone says he was looking to use his creativity in a different way. When he discovered the technical communication program at MSOE, he knew it was the right fit.

Boone has had more than just studying to worry about — he has needed to work while attending college, part-time during the school year and full-time in the summer.

While at school, Boone has found several ways to feel at home, and now, as an orientation assistant, he helps

welcome new students to campus. He enjoys participating in intramural sports, especially soccer and floor hockey, and has developed many great friendships and professional relationships with people in Milwaukee. “I love it here,” says Boone, who looks forward to graduation with mixed emotions. “I am very close to my friends on campus, and Milwaukee has become my second home.”

Boone was elected president of MSOE’s Student Union Board, the main programming and activities board, for the 2004-2005 school year,

and served in the spring of 2004 as a delegate to the National Association for Campus Activities, where he received a Leadership Track Award for volunteering.

“I have learned to be social, seek good advice, and to study hard,” says Boone, who was nominated for the Student Worker of the Year Award in 2003. “I realize that I have to work for what I want, and that very little is just handed out. I appreciate those gifts that are given to me, like the Wisconsin Tuition Grant. The WTG has helped me to pursue the degree of my choice.”

Wisconsin’s Private Colleges and Universities

Alverno College *Milwaukee*
Beloit College *Beloit*
Cardinal Stritch University *Milwaukee*
Carroll College *Waukesha*
Carthage College *Kenosha*
Concordia University *Mequon*
Edgewood College *Madison*

Lakeland College *Sheboygan*
Lawrence University *Appleton*
Marian College *Fond du Lac*
Marquette University *Milwaukee*
Milwaukee Institute of Art & Design *Milwaukee*
Milwaukee School of Engineering *Milwaukee*

Mount Mary College *Milwaukee*
Northland College *Ashland*
Ripon College *Ripon*
St. Norbert College *De Pere*
Silver Lake College *Manitowoc*
Viterbo University *La Crosse*
Wisconsin Lutheran College *Milwaukee*



WISCONSIN ASSOCIATION OF INDEPENDENT COLLEGES AND UNIVERSITIES